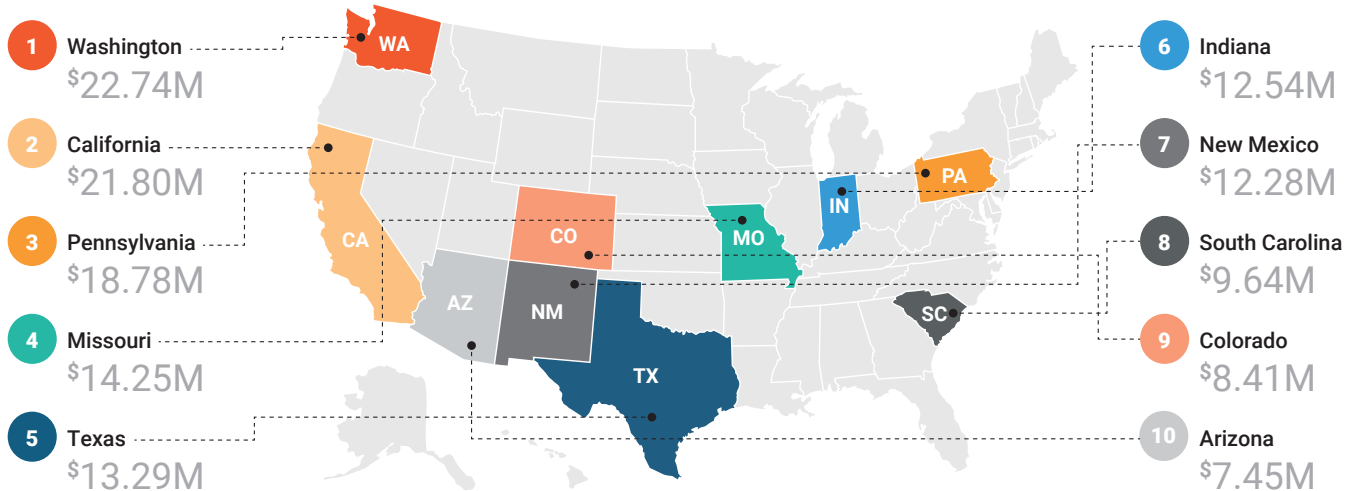


# 2021

## MARKET TRENDS REPORT

### TOP STATES BY SPEND (2021)



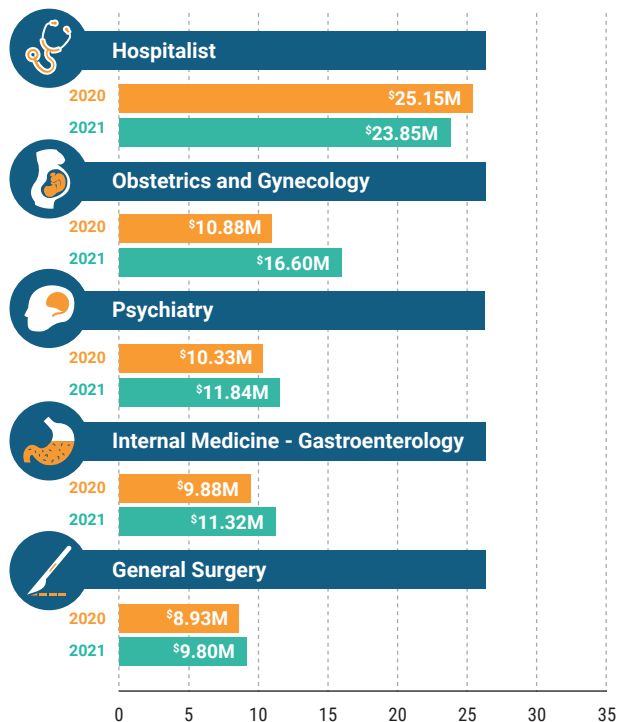
### TOTAL APPROVED INVOICE TIME



### FILL RATE



### TOP SPECIALTIES BY SPEND



### TOTAL NO. OF FACILITIES STAFFED



### TOTAL NO. OF BIDS SUBMITTED



### TOP INCREASES IN MEDIAN HOURLY RATE

- Nurse Practitioner - Acute Care . . . . . +50.71%
- Oncology . . . . . +40.14%
- Neurology . . . . . +17.00%
- Nurse Anesthetist (CRNA) . . . . . +15.38%
- Internal Medicine - Critical Care Medicine . . . . . +14.71%

### TOP DECREASES IN MEDIAN HOURLY RATE

- Family Nurse Practitioner . . . . . -8.76%
- Physician Assistant (PA) . . . . . -3.70%
- Internal Medicine - Infectious Disease . . . . . -2.36%
- Nurse Practitioner - Hospitalist . . . . . -1.69%